

A group of students are walking away from the camera on a paved path towards a modern building. The building has large glass windows with diagonal patterns and a sign that says "MAIN RECEPTION". The students are wearing backpacks and casual clothing. An orange semi-transparent overlay is on the left side of the image, containing white text.

# REOPENING DURING THE PANDEMIC

*OPERATIONALIZING  
HEALTH & SAFETY*

# OnDemand Recording

---

Click to [Watch the OnDemand Recording](#)

# Today's Panelists



**Yaowen Ma**  
Senior Analyst  
Verdantix



**Sastry Malladi**  
CTO & Co-founder  
FogHorn





**Verdantix is an independent research and consulting firm with a focus on innovative technologies that optimize business operations. Our research practices include expertise in environment, health and safety (EHS), operational risk (OpRisk), and smart buildings.**



Research Solutions



Consulting Capabilities

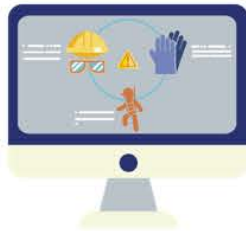


Events & Social Media



Webinars

# VERDANTIX OVERVIEW



EHS Software  
Platforms



Mobile EHS Apps



EHS Analytics &  
EDM Software



Wearables &  
Smart PPE



Unmanned Aerial  
Vehicles



Industrial Operations  
Risk Management



Hazcom Beacons  
& Sensors



In Vehicle Safety  
Monitoring

# FogHorn Background



Honeywell



2015

Began development of industry-first IIoT edge AI/ML platform

\$72M

Funding from industrial and technology leaders

100+

IIoT use cases deployed globally

50+

Partners in IIoT, SI, cloud, gateway, semiconductors and telco

30+

Awards for Industrial AI/ML, Edge Computing, IIoT

# FogHorn End Market Sectors

Channels: SI / VAD/ Telco



Manufacturing



Oil & Gas



Transportation




Infrastructure

Operating Efficiencies

Energy Efficiencies



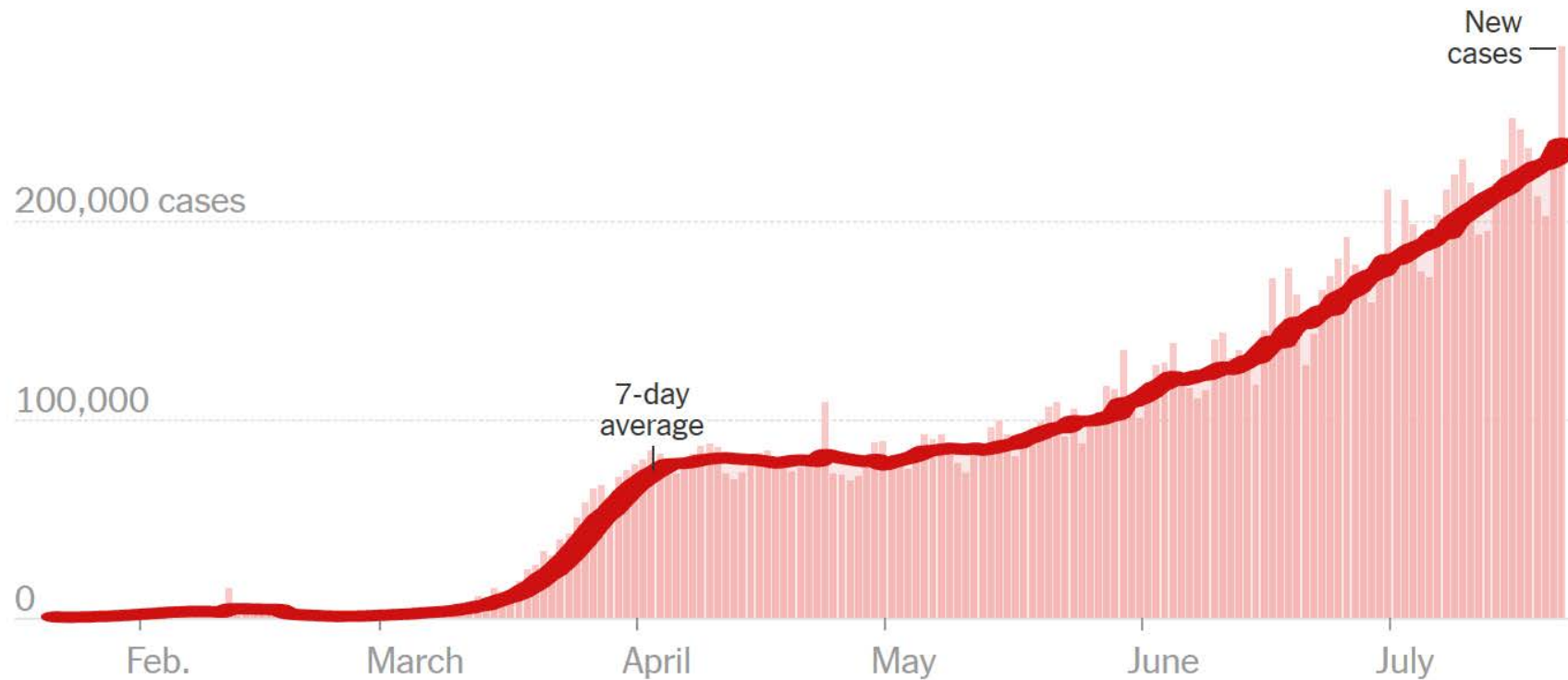


# NEW NORMAL FOR EHS IN THE POST COVID-19 WORKPLACE

*YAOWEN MA  
VERDANTIX*



## New reported cases by day across the world

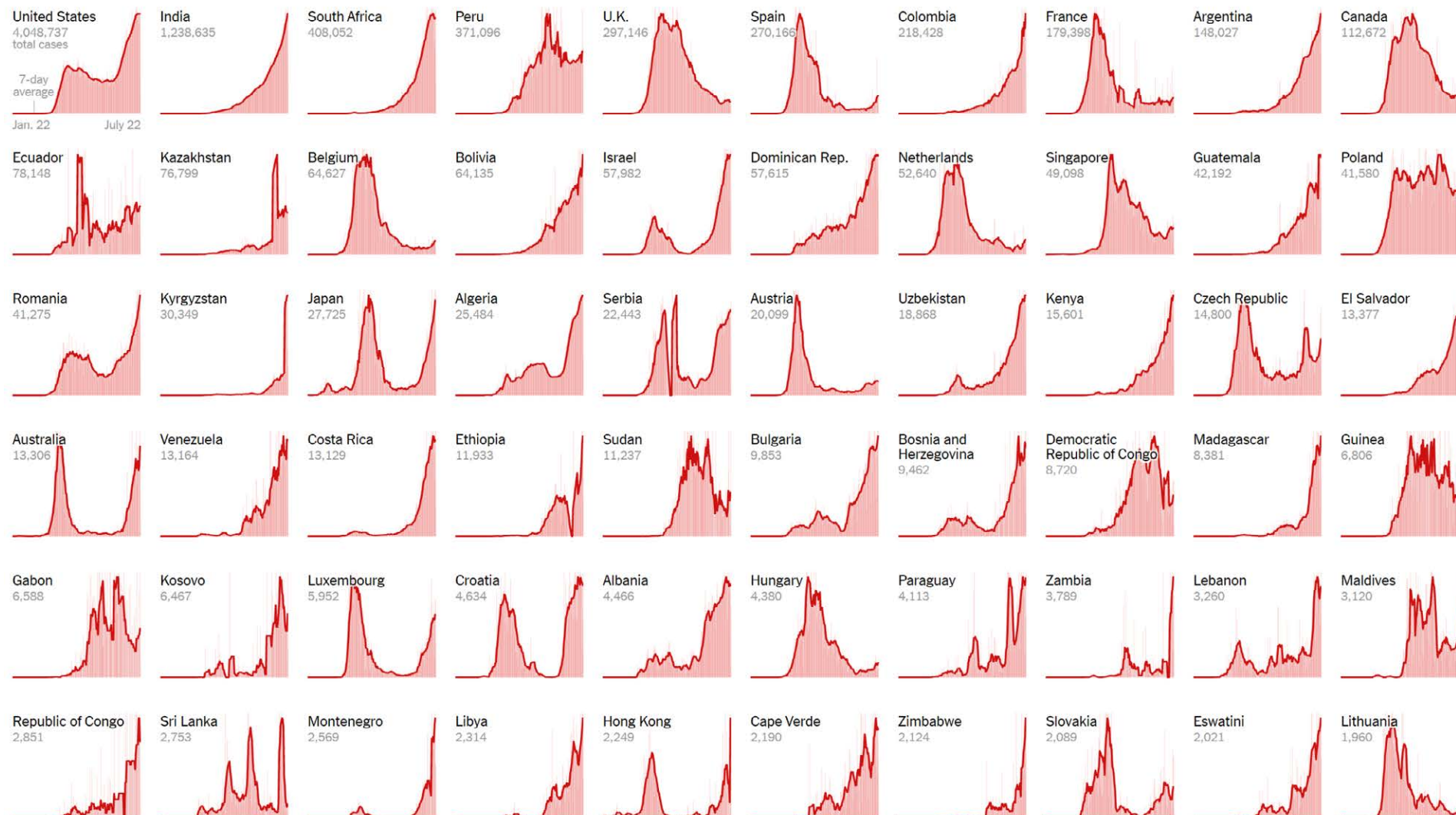


Note: The seven-day average is the average of a day and the previous six days of data.

# COVID-19 Resilience: Plan For A World Of Known Uncertainties



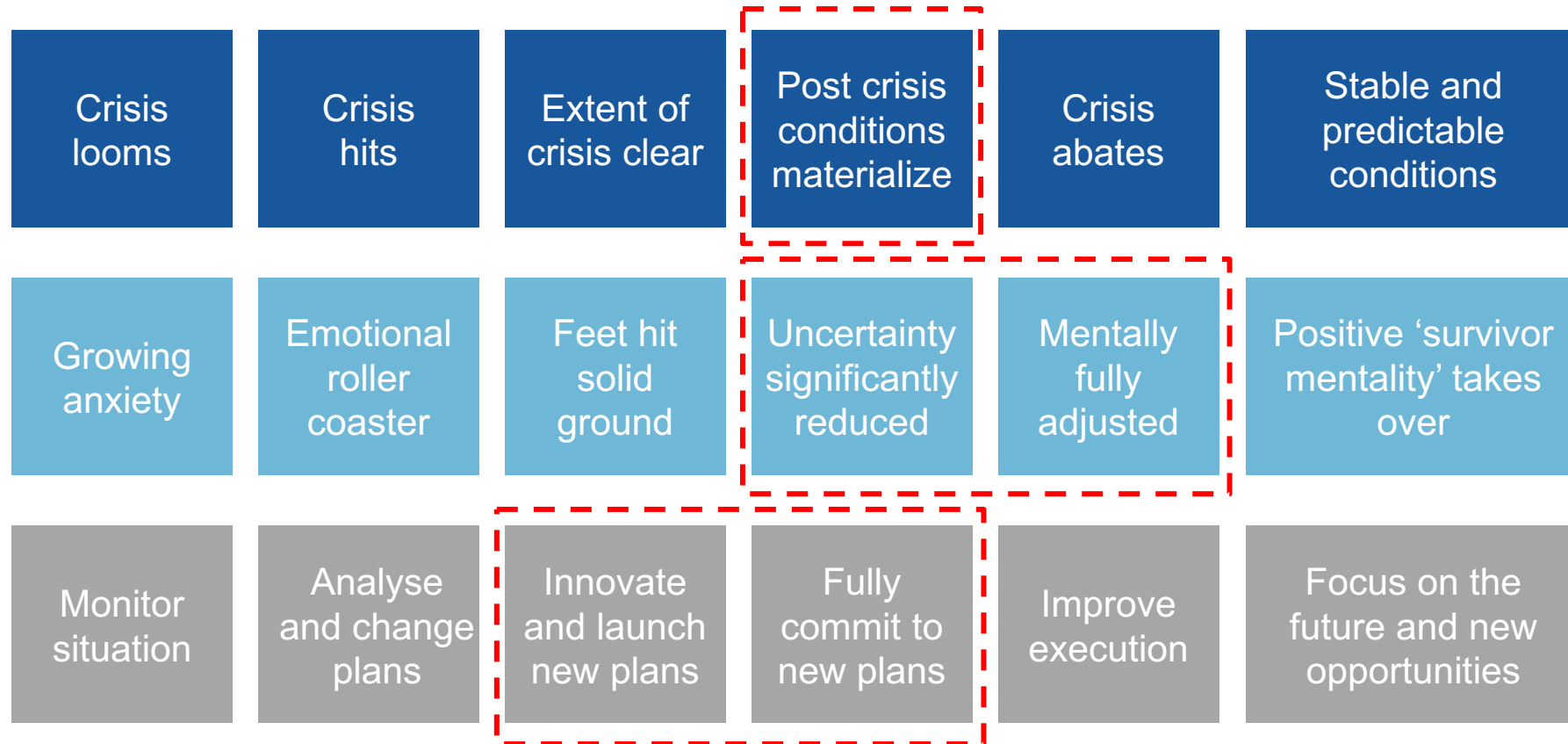
Charts show daily cases and are individually scaled to the maximum for each country.



# Every Business Executive Needs To Review Their Response Plan

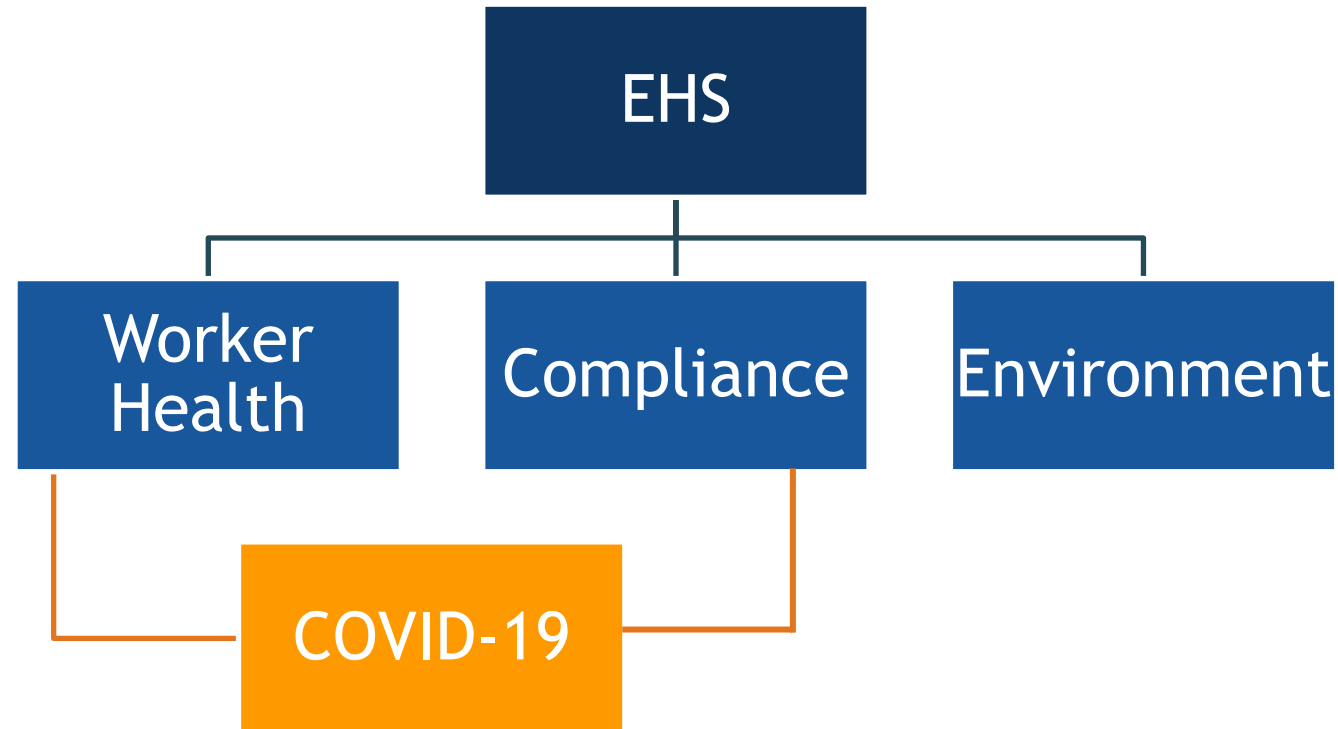


## Crisis Timeline: Emotional Reactions And Business Response





# EHS Executives Are Faced With A Wide Variety Of New Challenges And Responsibilities



EHS is the frontline defender and advocate for protecting workers from COVID:

- The EHS position is the vanguard for its workers safety and exposure, but many times operations is the general.
- Operations owns the business decisions, this can mean the opening, closing or shifting of activities for workers.
- EHS needs to push to protect workers, use data and information available to try to steer informed decisions.

COVID-19 doesn't let you be reactive. A reactive approaches to COVID means the infection is already out of hand:

- Cannot be handled the same way as a regular reactive incident management workflow
- Consistent testing, risk assessments and audits

## Proactive Approach

### **Procedures implemented before COVID spread.**

- No or limited exposure.
- Limited exposure acted upon quickly.
- Limited disruption in operations.

## Reactive Approach

### **Procedures implemented after positive COVID case.**

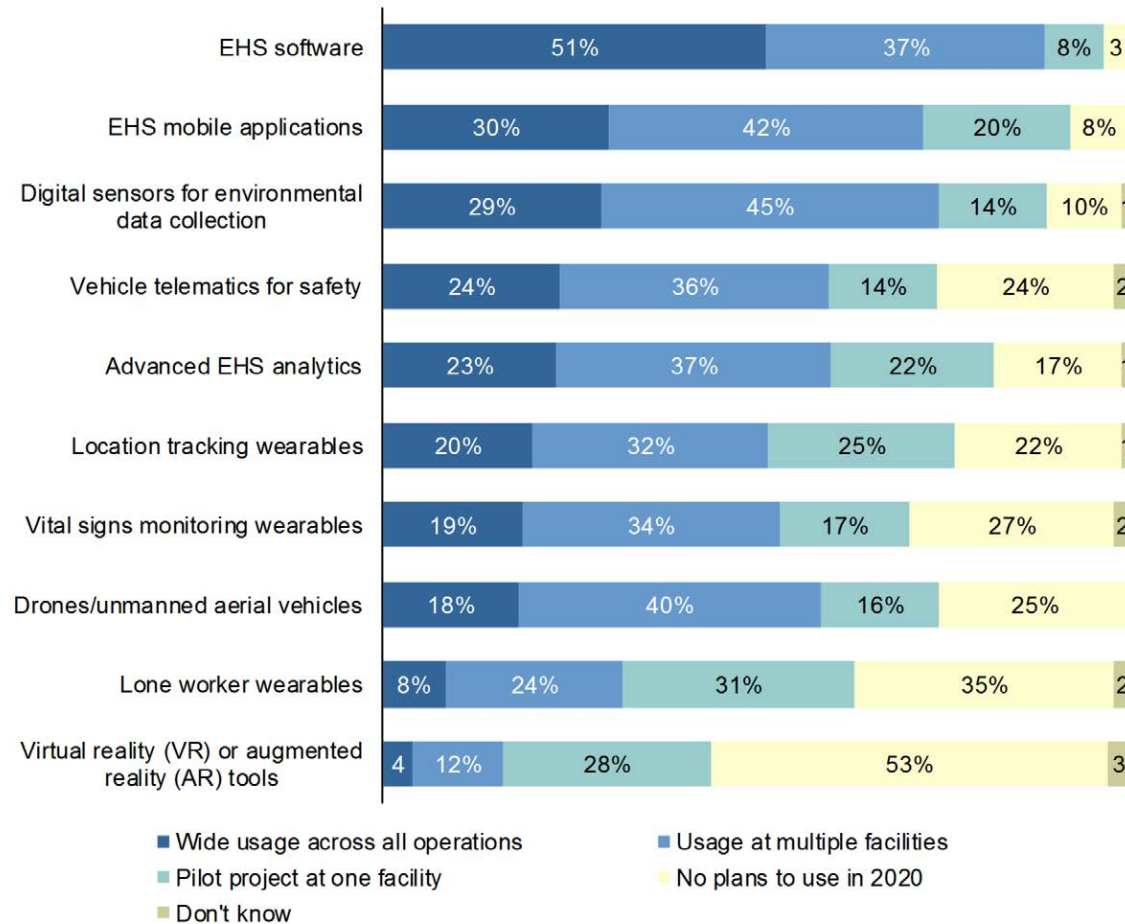
- wide-spread exposure.
- Contact-tracing becomes more difficult
- Major disruption in operations.

# COVID-19 Can Be The Spark To Accelerate Adoption Of Digital EHS Technologies



## Adoption Of Digital Technologies In 2020

"To what extent will your firm use the following digital technologies in 2020?"



Note: Data labels are rounded to zero decimal places, percentages less than 6% have been written as numbers  
Source: Verdantix



## New EHS Activities

### Telehealth Conferencing



- **Allows remote access to an occupational health professional via an embedded video and audio capability.**

- Leverages embedded EHS software capabilities.
- Leverages AR/VR technology.

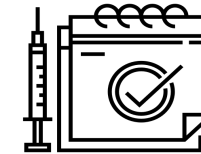
### Contact Tracing



- **Identify and support the contacts of those who have tested positive for an infectious disease such as COVID 19.**

- Testing.
- Identification.
- Notification.
- Follow up support/monitoring.

### Immunization Tracking



- **Manages and tracks largescale immunization programmes**

- Stores and tracks consent forms.
- Updates employee vaccination data.
- Generates reports for authorities like the CDC.

# New Processes: Key Items To Prepare Workers And Workplaces For Return To Work



## Example Process For All Employees

### Pre Start-Up

Screening Via:

- Mobile App
- Desktop
- Phone Call



### Start-Up

Screening On-Site:

- Mobile App
- At Kiosk Stations
- Completed By Supervisors
- Paper Copy



### Post Start-Up (Weekly)

Screening On-Site:

- Mobile App
- At Kiosk Stations
- Completed By Supervisors
- Paper Copy

## Example Process For Facilities & Operations

### Pre Start-Up

Check Inventory & Sanitize:

- Check inventory on disinfectants
- Sanitize work areas
- Establish hand sanitizer stations
- Check inventory for gloves
- Check inventory for masks
- Setup screening kiosks
- Train supervisors on screening
- Complete inspections for reconfigured workspaces to ensure 6ft distancing



### Start-Up & Post Start-Up (Daily)

Check Sanitization & Distancing:

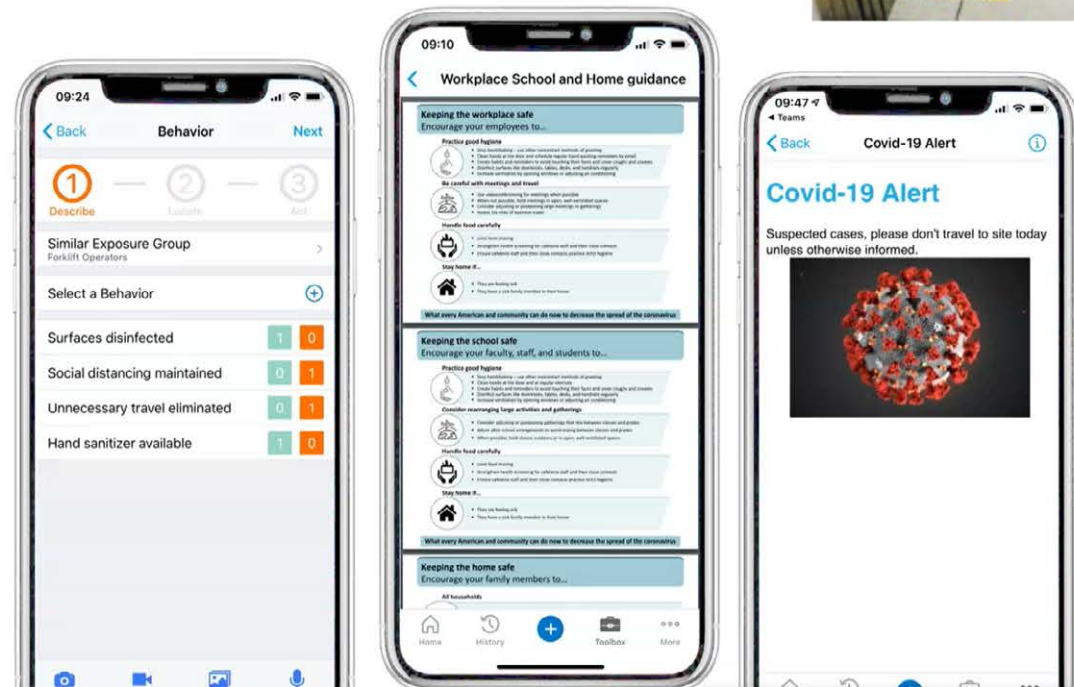
- Ask employees to wipe down work stations prior and after shifts
- Complete inspections to ensure 6ft distancing
- Complete inventory restocking to ensure hand sanitizer stations, disinfectants, gloves, masks, etc are filled

# New Tools: The COVID-19 Pandemic Can Be Managed in 40+ EHS Software Apps



## Responding To The Pandemic With EHS Technologies:

- Incident Management – Illness & Injury Reporting
- Observations – Employee Symptoms Tracking
- Checklists & Action Plans – Employee Wellness Checklists
- Ergonomics – Work-From-Home Resources
- Mobile Access – COVID-19 Bulletins
- Document Control (Policies, Procedures, And Work Instructions)
- Meetings Management
- Behavior Based Safety
- Chemicals SDS Access
- Occupational Health
- Travel & Contact Tracking
- Audit Management





# New Tools: The Post Covid-19 Workforce Will Rely On Risk-Centric Solutions



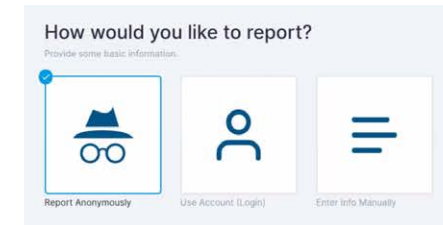
## 1. Ensure Facility Preparation and Readiness

- Inspections – COVID-19 site readiness
- Checklists & Action Plans – Daily sanitation checklists



## 2. Facilitate Pandemic Related Training and Awareness

- Training Content & Tracking
- Document Control & Management
- Mobile Communications & Alerts

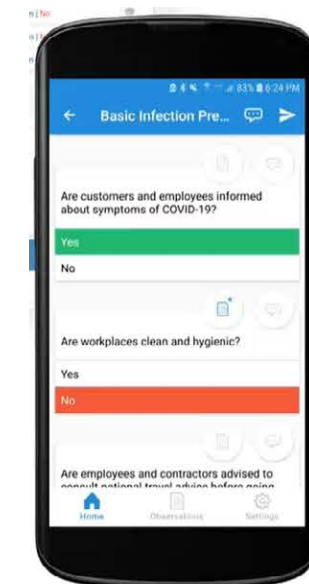


## 3. Proactively Manage Employee COVID-19 Illnesses and Exposure

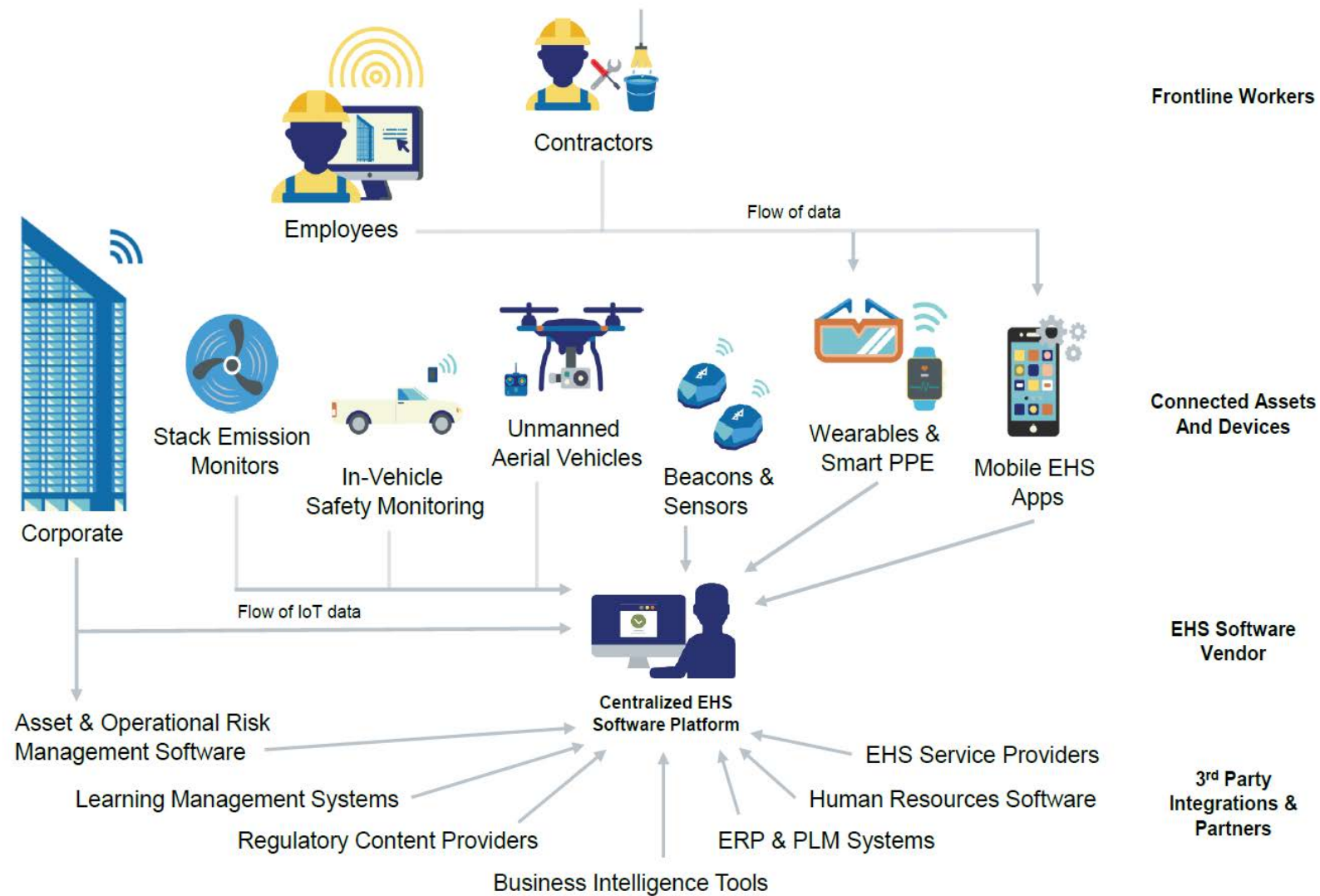
- Observations - Employee self-assessments & symptoms tracking
- Checklists & Action Plans – Employee wellness check
- IoT Devices & Wearables – Alerts when within 6ft distance

## 4. Managing Return To Work Operations

- Supplier & Contractor Management – Real-time go-live status update
- Business Continuity Planning – Scenario analysis and crisis recovery
- Change Management – Resource centers and industry working group



# The Connected Digital Ecosystem For EHS Information Management Will Be Essential In Tackling Covid-19



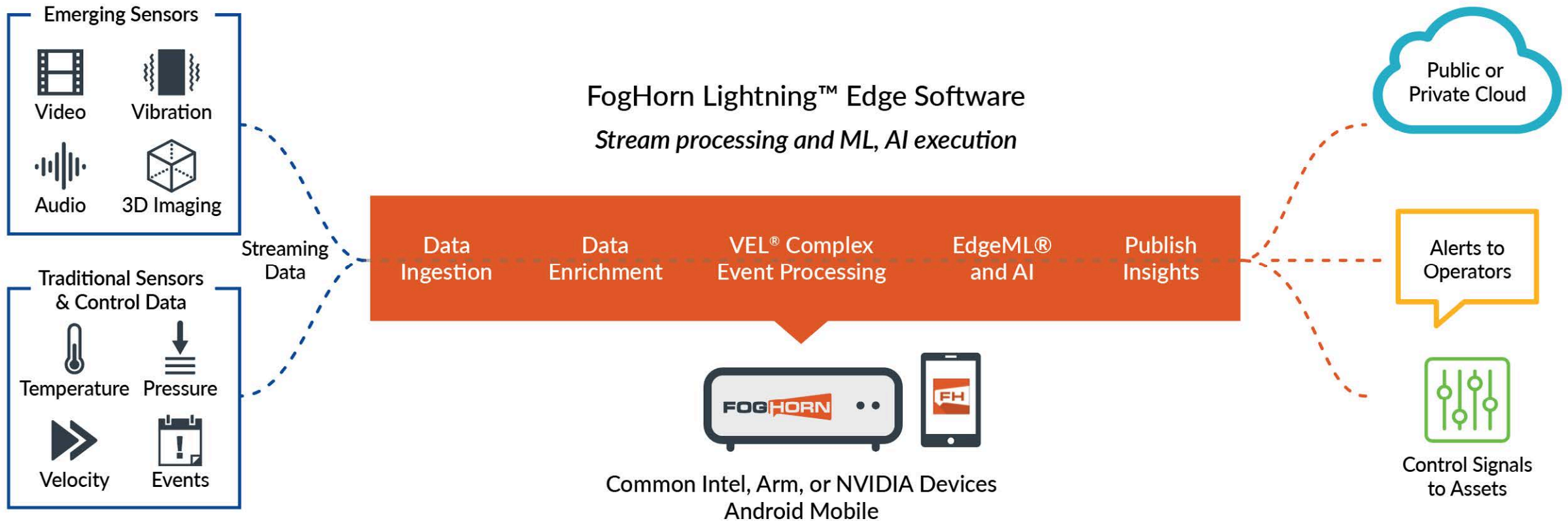


# AI & COMPUTER VISION'S ROLE IN A HEALTHY WORKPLACE

*SASTRY MALLADI  
FOGHORN*

# Turning Data into Actionable Insights

## *FogHorn's Edge IIoT / AI Software Platform*

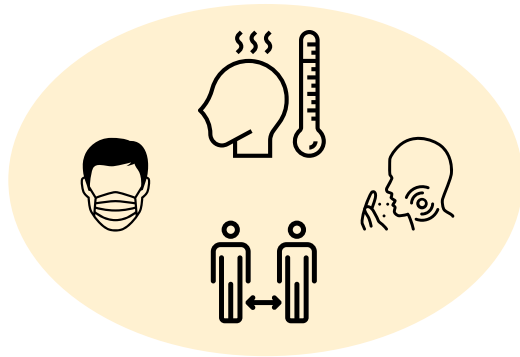




# Lightning™ Health & Safety Solutions

## *Enterprise Platform Replaces Manual Monitoring & Point Solutions*

### Health Monitoring Solutions



### Safety Monitoring Solution



### Hazard Detection Custom Solutions



FogHorn solutions combine our Edge AI platform with ready-to-use machine learning models

#### *Features include:*



Customized machine learning models



KPIs & customizable dashboards



Automated SMS & email alerts



Insights and compliance reporting



Enterprise editions for customizations, integrations with IT systems & access control

# Health Monitoring Solutions

*Help Prevent Exposure to Colds, Flu & Viruses*

A suite of solutions to support health monitoring

Elevated Body Temperature (EBT)



Social Distancing



Cough Detection

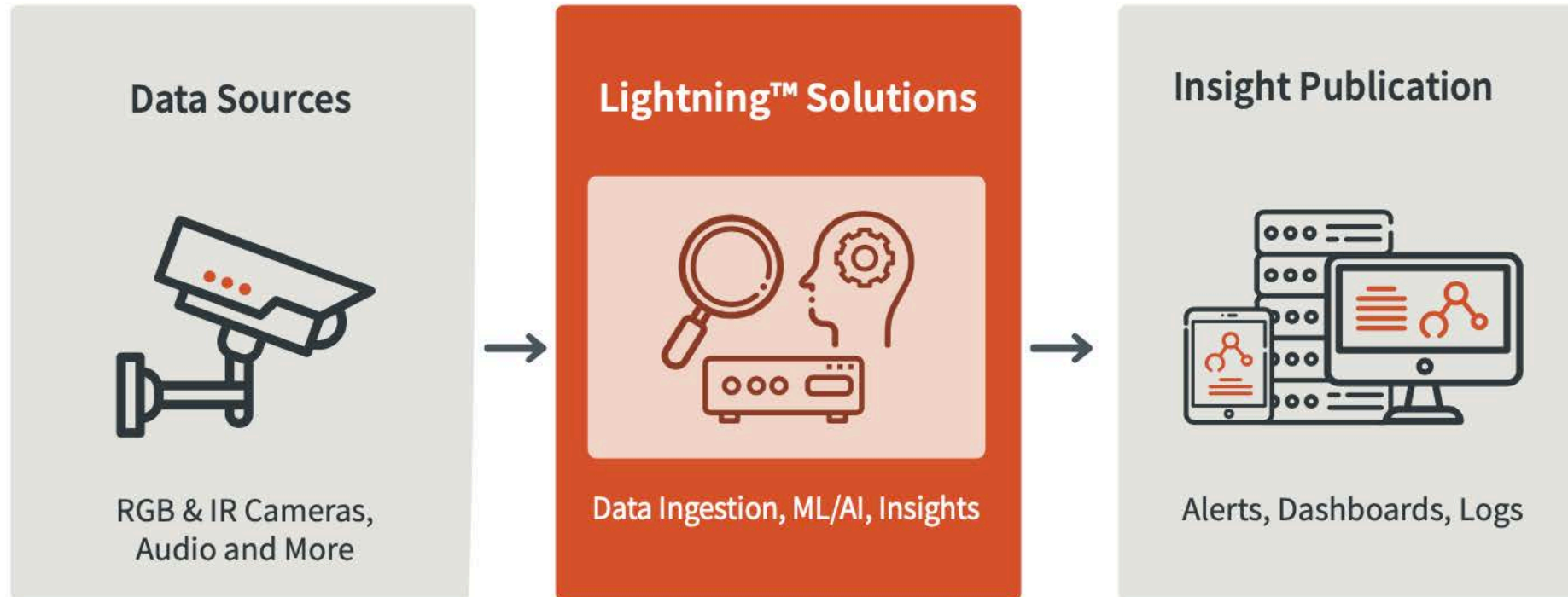


PPE/Mask Detection



# How Lightning Solutions Work

*A Simple, Out-of-the-Box Solution using Video*

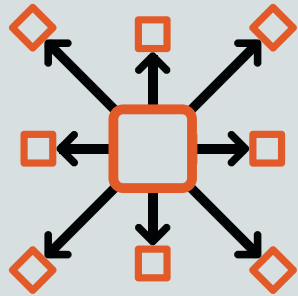


Installs on Intel, Arm, or NVIDIA Devices  
Android Mobile

# Delivering Immediate ROI

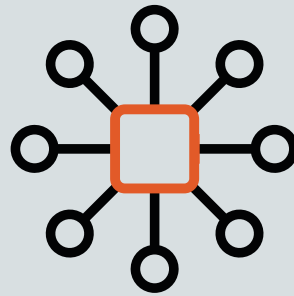
*Deploy Solutions in only a Few Hours*

## Install



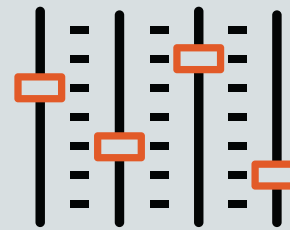
Deploy to common Intel, Arm, & Android devices

## Connect



Configure the required data inputs

## Calibrate



Tune the solution for your environment

## Operationalize

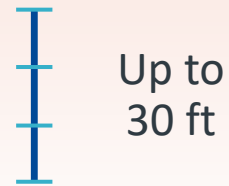


Set-up alerts, dashboards and data publishing



# FogHorn AI Drives High-Performance EBT

## FogHorn AI-driven Temperature Detection



Face Detection  
Distance



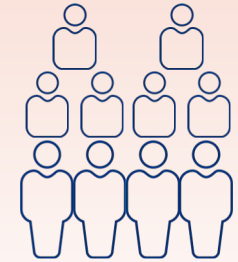
Tear duct  
readings,  $.3^{\circ}\text{C}$

Accuracy by  
Location



Moving, wide-  
angle readings

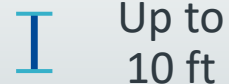
Angle of  
Measurement



Up to 10  
people

Number of  
Faces

## Comparable Camera-only Temperature Screening



Up to  
10 ft

Face Detection  
Distance



Facial avg/max  
readings,  
 $\sim .5 - 1^{\circ}\text{C}$

Accuracy by  
Location



Stationary,  
camera-facing  
readings

Angle of  
Measurement



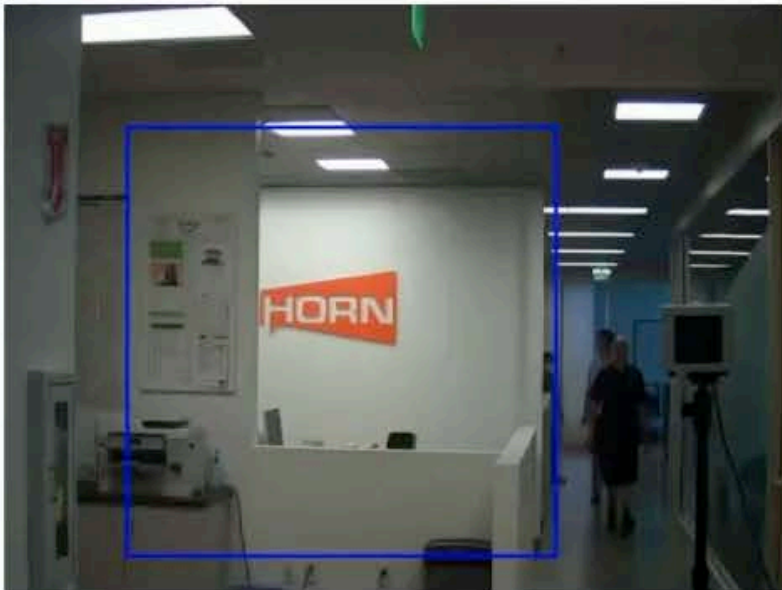
Up to 3 people

Number of  
Faces

FogHorn metrics based on preliminary internal testing

Please look at the camera for  
body temperature check

Live camera view



No face detected

IR video



Body Temperature (deg F)

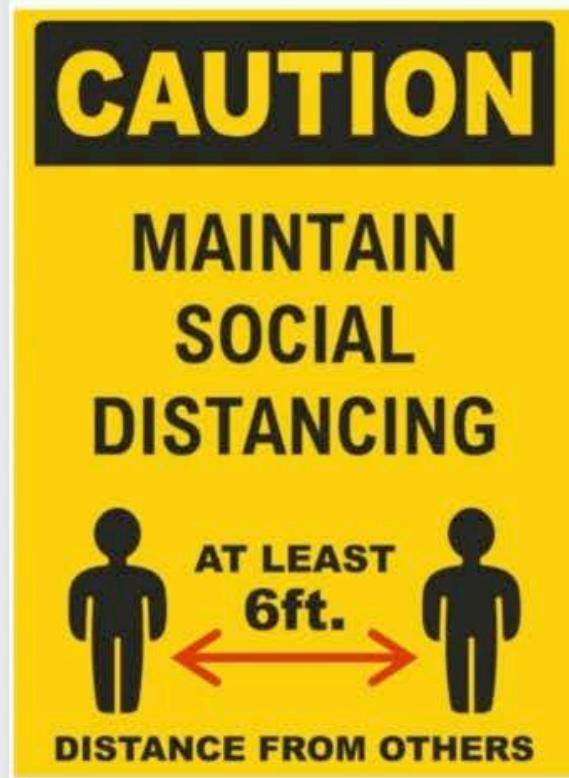
0

## NOTICE

If your temperature is too high,  
please do the following:

- 1) Go to Room 101 immediately  
for further screening
- 2) Contact your manager
- 3) Avoid contact with others

ELEVATED BODY TEMPERATURE



Maintain social distancing

Live video



SD violation count

3

Violation rate

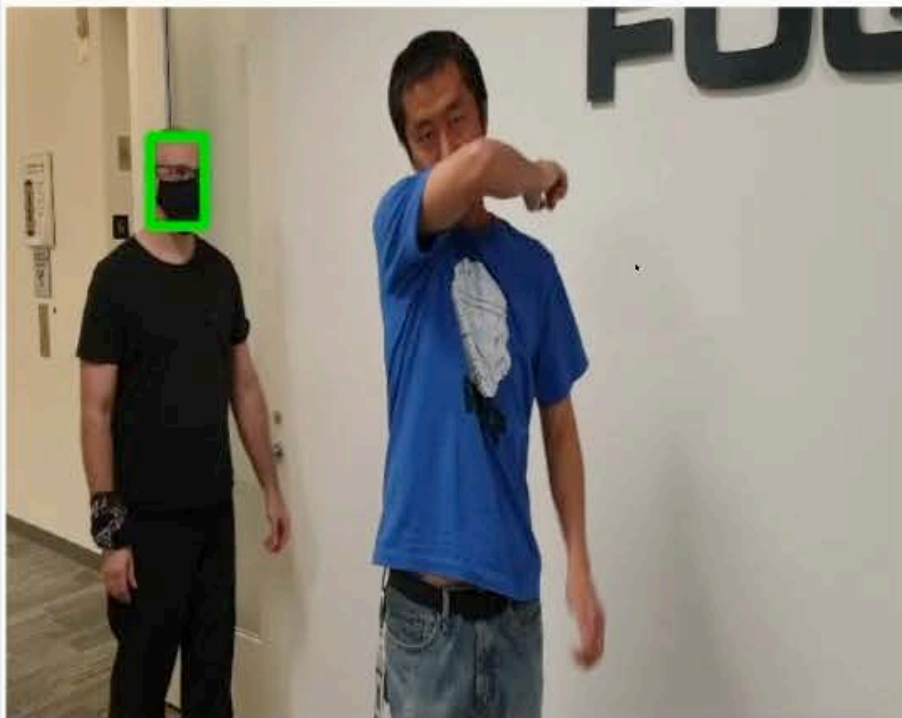
0.6

Current Occupancy

5

SOCIAL DISTANCING MONITORING

Mask detection



Please  
proceed

Mask violation count

0

**MASK DETECTION**





Cough detection 1

## COVER YOUR COUGH

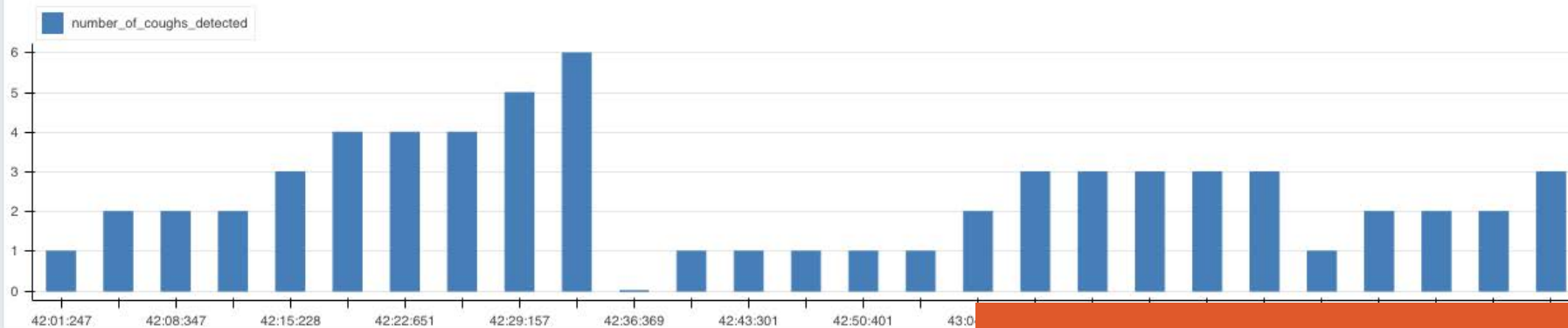


Use a tissue

or your  
sleeveNOT your  
hand

Cough detected

Accumulative number of cough detected



COUGH DETECTION

**FogHorn Alert: High body temperature detected**

Vilas Jangale <vilas.jangale@foghorn.io>  
To: Kai Wang <kai.wang@foghorn.io>

Tue, Jul 28, 2020 at 12:21 PM

**Alert Summary**

Recorded Temperature: 101.5 deg F

Date: Tue, Jul 28, 2020

Time: 12:14 PM UTC



Thank you,  
FogHorn Systems

EMAIL ALERTS

# Basic & Enterprise Versions Available

*Customize the Solution for Your Organization*

## Basic Edition

---

- All four health monitoring use cases
  - Elevated body temperature detection
  - Mask detection
  - Social distancing monitoring
  - Cough detection
- Customizable alerts (email, sms)
- Customizable dashboards

## Enterprise Edition

---

- Includes everything from Basic
- Polyglot SDK for custom integrations
- Integrations with existing IT systems either through FogHorn services or a third party
  - Access control integration
  - Video management service integration
  - Any integration with central persistence stores / dashboarding needs

# Summary: Lightning™ Health Solutions

## *Ensuring Health & Safety through Automated Monitoring*

- **Flexible:** choose the solutions you need, add more as needed
- **Customizable:** tune machine learning models for your unique environments
- **Integrated:** built on a common AI platform for enterprise scalability
- **Actionable:** real-time insights for maximum safety







QUESTIONS?